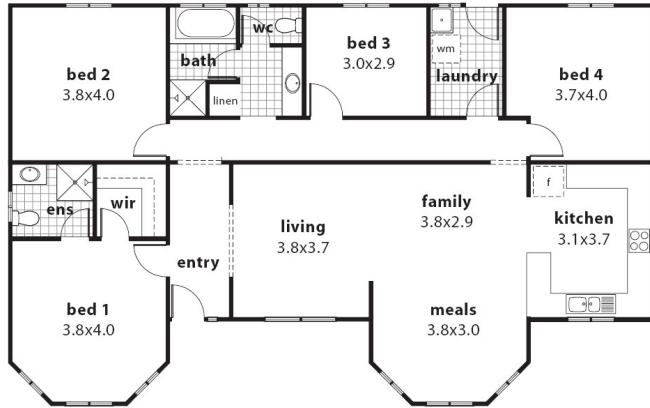


# Inspiring designs now on show at Hackham



## Features include:

- HIA Award winning home
- home built on structurally designed concrete slab or raised on concrete block footing system
- transportable option—home can be transported to site
- front facing bay windows
- bed 1 with walk in robe and ensuite
- large open plan living area
- windows at front of home designed to capture views
- high quality finishes and inclusions

**Priced from \$93,350**

## Rosewood



**Please note:** All prices are GST inclusive. Prices are subject to change without further notice. This pricing is based on the client providing a cleared, level or cut building platform prior to construction and within 100km of Adelaide GPO. Bush fire assessment, ocean corrosion protection and 5 star energy requirements costs will be forwarded to the client after individual assessment. All pictures and elevations are for illustration purposes only. All sizes are approximate. E&OE. 4/02/08

**Free Call 1800 675 706**  
**rivergumhomes.com.au**

©2007 Rivergum Homes Pty Ltd

**rivergum**  
HOMES